

Shell
Lube**VideoCheck**

Insider knowledge,
better engine operation



Shell Lubricants



Shell LubeVideoCheck

gives you “insider knowledge” about your engine

Discover how to optimise engine assessment without dismantling, saving both time and money

Shell LubeVideoCheck is a state-of-the-art fibre-optic tool that allows us to inspect key internal engine components including inaccessible areas such as the cylinder head, valves, cylinder walls and pistons without dismantling the engine itself. All you need to do is remove the injector, glow or spark plug to gain access.

It's a cost effective, efficient and non-invasive way of inspecting all engine and equipment components, thereby minimising the time and costs associated with an engine strip-down and downtime. It allows you to assess the engine's condition and spot potential failures before costly mechanical damage occurs.

Who benefits?

Companies who want to prevent breakdowns and unscheduled maintenance. Shell LubeVideoCheck lets you look inside the engine and equipment and our engineers will provide a detailed condition assessment and recommend any actions required.

Components that are inspected include:

- Piston
- Combustion chamber
- Cylinder wall
- Valve seats and heads

Using Shell LubeVideoCheck gives you a means of easily identifying potential damage and problems.

It will also free up more time for your workshop staff to focus on preventative maintenance.



What are the benefits?

- Reduced maintenance costs including man-hours and replacement parts
- Significant reduction in downtime, keeping your vehicles and equipment working
- A quick and easy way to diagnose problems and focus your maintenance teams on those vehicles and engines which need attention
- Increased efficiencies in maintenance scheduling, fleet and equipment capability and utilisation
- May help secure higher resale value by demonstrating engine state and efficiency
- Improved operational efficiency and extended life of your equipment
- Can help extend oil drain intervals

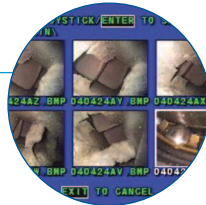


Shell LubeVideoCheck reports are custom made to your needs and prepared to your specifications. The reports include a condition report, highlighting any problems, causes and actions required.

Five simple steps

to the Shell LubeVideoCheck inspection service

- 1** Your Shell representative reviews your requirements and schedules a convenient time for the Shell LubeVideoCheck inspections
- 2** A trained Shell LubeVideoCheck expert inspects the components in each truck or equipment
- 3** The video images are recorded and interpreted by a trained Shell LubeVideoCheck expert
- 4** A report is prepared for you
- 5** The Shell LubeVideoCheck recommendations are explained, enabling you to take the required action



The Shell difference

Shell LubeVideoCheck experts are highly trained in the operation of the specialist equipment and most importantly in the interpretation of the video images they provide. They have extensive experience and can pinpoint and accurately diagnose problems based on the condition of the components.

We offer:

- Highly qualified diagnosticians
- State-of-the-art fibre optic equipment
- Comprehensive reports, diagnosis and recommendations
- Significant improvements to your maintenance program
- Confidentiality
- Significant cost saving is a direct result of our products and services



Shell LubeVideoCheck benefits at a glance

The use of diagnostic tools such as Shell LubeVideoCheck is key in the armoury of preventative and predictive maintenance. Many leading companies utilise Shell LubeVideoCheck as an important part of their planned and predictive maintenance strategy.

- Greater control on maintenance costs
- Customised reports with remedial actions identified
- Allows for increased efficiencies in maintenance scheduling
- Helps you identify premature wear and tear and manage replacement costs
- Gives a great insight into the performance of the lubricant in use

The most important opinion

What our Shell LubeVideoCheck customers say:

"Thanks to Shell LubeVideoCheck we could detect faults before a catastrophic event happened, which would have stopped our equipment from working. We avoided that thanks to Shell." **Julio Valladare Head of Maintenance, Stiglich Transport**

Mr KC Chan
(District Sales Manager)
H/P : 019-2216107
Evolution Oiltech Sdn Bhd
K-02-03, Kuchai Business Park
No. 2, Jalan 1/127 Off Jalan Kuchai Lama
Kuchai Lama
58200 Kuala Lumpur
lubesales@platform.com.my

'Shell Lubricants' refers to the various Shell companies engaged in the lubricants business.

Find out more

- talk to Shell Lubricants

Please contact your local Shell Lubricants representative for more information about the products and Services we can offer for your business. The Shell Lubricants Services offer also includes **LubeMatch**, **LubeAdvisor**, **LubeExpert**, **LubeCoach**, **LubeClinic**, **LubeAnalyst**, **LubeReclaim** and **LubePlanner**.



Shell Lubricants